

# M/Y CURRENT \$EA



<b>Length</b>	95 ft
<b>Builder</b>	Princess
<b>Launch/Refit</b>	2011 / 2020
<b>Hull</b>	Mono
<b>Cabins/Sleeps</b>	4 / 8
<b>Guests</b>	12
<b>Crew</b>	3
<b>Cruising Speed</b>	26 knots
<b>Max Speed</b>	32 knots

# EXTERIOR

Current \$ea underwent an extensive refit in 2020 with an all-new interior and the addition of numerous water toys and state of the art communications including Sat Wi-Fi. She features extensive desk space for relaxing and entertaining on the aftdeck, foredeck and flybridge. The flybridge is the focal area for charter guests with 360° views, wet bar, lounging areas and alfresco dining.



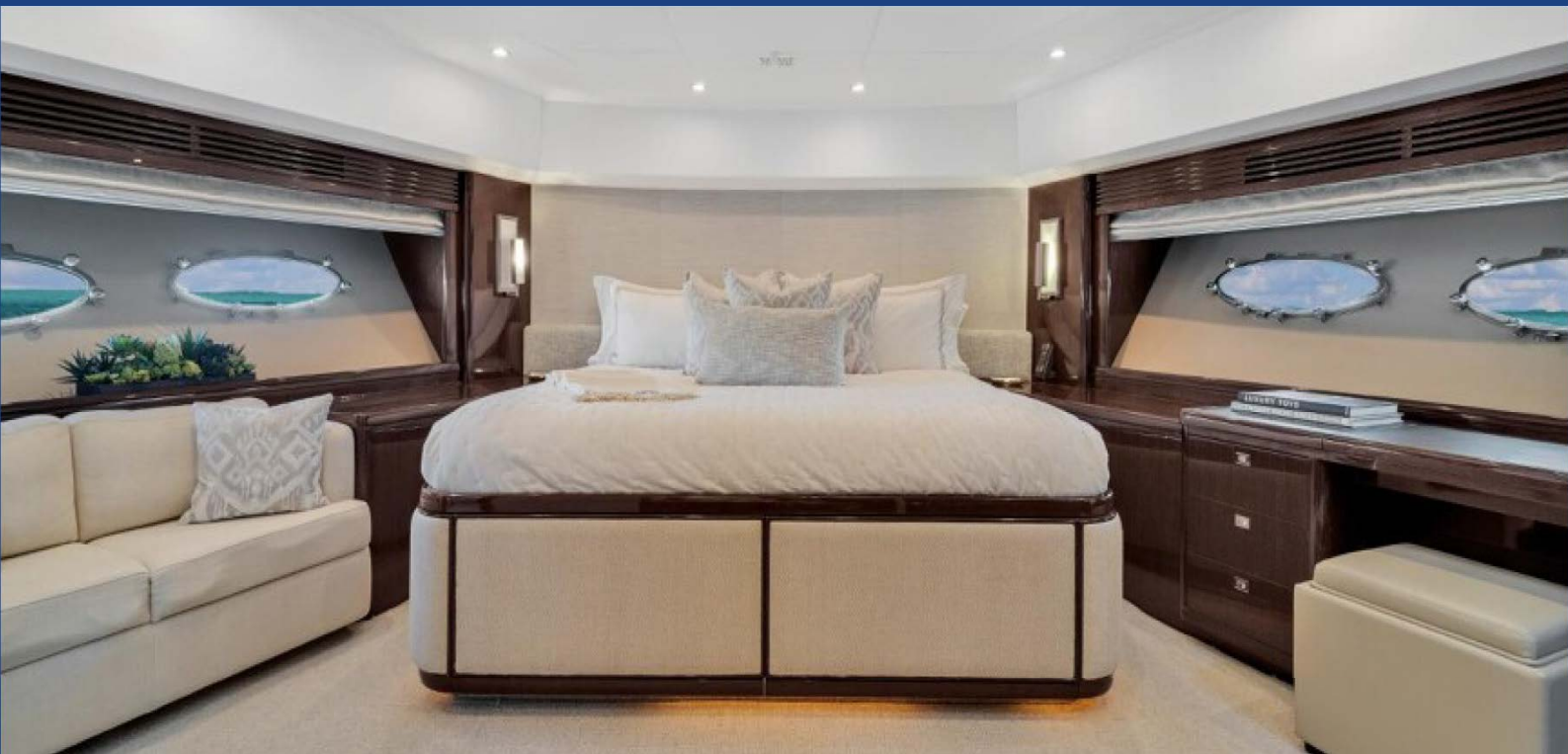
# INTERIOR

The extensive windows and light floors provide a bright, airy interior exaggerating the expansive salon space. The formal dining salon seats 8 guests.



# ACCOMMODATION

Current \$ea sleeps 8 guests in 4 cabins. The master cabin and VIP cabin feature king size beds, the double guest cabin has a queen size bed, in addition to a further guest cabin with twin beds.





## WATER TOYS

- Jet Ski
- Inflatable Slide
- Knee Board
- Wakeboard
- Snorkeling Gear
- 35ft Cobia Tender

